

# CONDITION REPORT - ELECTRIC

<b>Manufacturer</b>	<b>Model</b>	<b>Year</b>	<b>Serial Number</b>
<b>HYSTER COMPANY</b>	<b>R30XM3</b>	<b>2013</b>	<b>H118N01717L</b>

Mast		Hours	4217
Mast Height Lowered		Voltage	24 Volt
Mast Height Raised	188	Attachment	None
Hydraulic Control Valve		Directional Control	Lever
Capacity	2500	Tires	Cushion

Mast Condition		Steering Pump Condition	
Mast Comments		Steering Pump Comments	
Lift Cylinder Condition	Not applicable	Hydraulic Pump Condition	
Lift Cylinder Comments		Hydraulic Pump Comments	
Tilt Cylinder Condition	Not applicable	Hydraulic Motor Condition	
Tilt Cylinder Comments		Hydraulic Motor Comments	
Carriage Condition	Not applicable	Control System Condition	
Carriage Comments		Control System Comments	
Load Backrest Condition	Not applicable	Drive Motor Condition	
Load Backrest Comments		Drive Motor Comments	
Forks Condition		Differential Condition	
Forks Comments		Differential Comments	
Overhead Guard Condition		Drive Tires % Remaining	
Overhead Guard Comments		Drive Tires Condition	
Seat Condition	Not applicable	Steer Tires % Remaining	
Seat Comments		Steer Tires Condition	
General Appearance Condition	Good	Steer Axle Condition	Not applicable
General Appearance Comments		Steer Axle Comments	
General Comments		Brakes Condition	Not applicable
		Brakes Comments	
		Battery Present	No
		Charger Present	Yes
		Electrical Condition	
		Electrical Comments	

Inspector Company Name	Briggs	Inspection Date	8/28/2018 11:36:18 PM
Inspector Name	jdelagarza		

(\* Legend: =Checked OK)









Lift Truck Model  
R30XM3

Attachment: 1016 mm (40 in) Wide X 813 mm (32 in)  
Deep Op Platform + 952 mm (37.5 in)  
Forks (effective length)

Type EO 24 Volts Max A.H.(6 Hr R) 1240

Truck Weight

Less Battery 2532 kg (5584 lb)

Max Battery 3394 kg (7484 lb)

Min Battery Wt. 726 kg (1600 lb)

Max Battery Wt. 962 kg (1900 lb)

Base Width 1219 mm (48 in)

Wheelbase 1447 mm (57 in)

**Trained Operators and Mechanics Only**



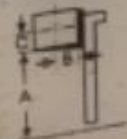
Read Operating Manual located  
on Drive Unit Cover

**WARNING**

Failure to follow operating, inspection, and  
maintenance instructions can cause serious  
injury or death!

**CAPACITY WITH MAST VERTICAL  
AND EQUIPPED AS SHOWN**

MAXIMUM CAPACITY	1130 kg (2500 lb)	kg (lb)
Load Height Dim. A	7320 mm (288 in)	mm (in)
Load Center Dim. B	610 mm (24 in)	mm (in)
Load Center Dim. C	610 mm (24 in)	mm (in)



Serial Number  
H118ND1717L

