

# CONDITION REPORT - ELECTRIC

Manufacturer	Model	Year	Serial Number
HYSTER COMPANY	E80Z	2011	E098N03094J

Mast	Hours	9613
Mast Height Lowered	Voltage	
Mast Height Raised	Attachment	
Hydraulic Control Valve	Directional Control	
Capacity	Tires	

- |                              |                           |
|------------------------------|---------------------------|
| Mast Condition               | Steering Pump Condition   |
| Mast Comments                | Steering Pump Comments    |
| Lift Cylinder Condition      | Hydraulic Pump Condition  |
| Lift Cylinder Comments       | Hydraulic Pump Comments   |
| Tilt Cylinder Condition      | Hydraulic Motor Condition |
| Tilt Cylinder Comments       | Hydraulic Motor Comments  |
| Carriage Condition           | Control System Condition  |
| Carriage Comments            | Control System Comments   |
| Load Backrest Condition      |                           |
| Load Backrest Comments       | Drive Motor Condition     |
| Forks Condition              | Drive Motor Comments      |
| Forks Comments               | Differential Condition    |
|                              | Differential Comments     |
| Overhead Guard Condition     | Drive Tires % Remaining   |
| Overhead Guard Comments      | Drive Tires Condition     |
|                              | Steer Tires % Remaining   |
| Seat Condition               | Steer Tires Condition     |
| Seat Comments                | Steer Axle Condition      |
|                              | Steer Axle Comments       |
| General Appearance Condition | Brakes Condition          |
| General Appearance Comments  | Brakes Comments           |

General Comments

- Battery Present
- Charger Present
  
- Electrical Condition
- Electrical Comments

Inspector Company Name	Inspector Date	11/13/2018 9:40:08 AM
Inspector Name	Nicole Griffin	

(\* Legend: =Checked OK)

**WARNING**

**Trained Operators and Mechanics Only**



Read Operating Manual located on seat or in operators compartment

Failure to follow operating, inspection, and maintenance instructions can cause serious injury or death.

**CAPACITY WITH MAST VERTICAL AND EQUIPPED AS SHOWN**



Lift Truck Model E80Z

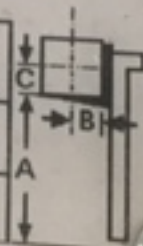
Serial No. E098N03094J

Attachment: 1067 mm (42 in) Carriage + Cascade Paper roll clamp 60G-RC-093

Truck Wt. Less Battery 6640 kg (14620 lb) Type EO 48 Volts  
Truck Wt. Max Battery 8600 kg (18940 lb) Max A.H.(6 Hr Rt)1400  
Allowable Battery Wt. 1320 kg (2920 lb) to 1960 kg (4320 lb)  
Tread Width 1040 mm (41 in) Back Tilt 5.0 Degrees

Tire Front Rear  
Size 22X9X16 Cushion 18X6X12-1/8 Cushion  
Pressure —

MAXIMUM CAPACITY	Load Height Dim. A	Load Center	
		Dim. B	Dim. C
2060 kg (4550 lb)	5550mm (218.5 in)	810 mm (32 in)	810 mm (32 in)
2180 kg (4800 lb)	4415 mm (173.8 in)	810 mm (32 in)	810 mm (32 in)



1473043 3







HYST



1

2

3

4





