

CONDITION REPORT - ELECTRIC

Manufacturer	Model	Year	Serial Number
HYSTER COMPANY	W40Z	2013	B218N28922L

Mast	6 Lift Pallet	Hours	6
Mast Height Lowered		Voltage	24 Volt
Mast Height Raised	6	Attachment	
Hydraulic Control Valve		Directional Control	
Capacity	4000	Tires	Cushion

Mast Condition		Steering Pump Condition	
Mast Comments		Steering Pump Comments	
Lift Cylinder Condition		Hydraulic Pump Condition	
Lift Cylinder Comments		Hydraulic Pump Comments	
Tilt Cylinder Condition		Hydraulic Motor Condition	
Tilt Cylinder Comments		Hydraulic Motor Comments	
Carriage Condition		Control System Condition	
Carriage Comments		Control System Comments	
Load Backrest Condition		Drive Motor Condition	
Load Backrest Comments		Drive Motor Comments	
Forks Condition		Differential Condition	
Forks Comments		Differential Comments	
Overhead Guard Condition		Drive Tires % Remaining	60
Overhead Guard Comments		Drive Tires Condition	
Seat Condition		Steer Tires % Remaining	
Seat Comments		Steer Tires Condition	
General Appearance Condition		Steer Axle Condition	
General Appearance Comments		Steer Axle Comments	
General Comments		Brakes Condition	
		Brakes Comments	
		Battery Present	Yes
		Charger Present	Yes
		Electrical Condition	
		Electrical Comments	

Inspector Company Name	MH EQUIPMENT	Inspection Date	12/11/2018 8:32:07 AM
Inspector Name	Jmarzian		

(* Legend: =Checked OK)



GPS UNAVAILABLE
12/3/2018 12:41:22 PM



GPS UNAVAILABLE
12/3/2018 12:41:54 PM

WARNING

Operators and
Mechanics Only

Read Operating
Manual located on
the unit cover



Lift Truck Model W40Z

Serial Number: B218N28922L

Battery Voltage: 24 Volts Max A.H. 200

Truck Weight Less Battery 249 kg (550 lb)

Truck Weight Max Battery 476 kg (1,050 lb)

Minimum Battery Weight 136 kg (300 lb)

Maximum Battery Weight 227 kg (500 lb)

MAXIMUM CAPACITY 1,814 kg (4000 lb)

GPS UNAVAILABLE
12/3/2018 12:42:52 PM

TC3 EQ 10KW

EnerSys



LISTED

INDUSTRIAL SUPPLY COMPANY
PARC HORIZON 2000
F-62117 BREBIERES

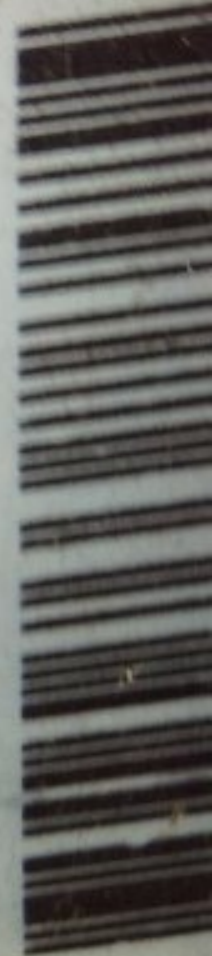
Input / AC

3x480V / 15A - 50/60 HZ

Output / DC

24V	36V	48V
240A	240A	180A

SN: IVK23951



41.006631 -89.136773
12/10/2018 1:57:59 PM

TC3 EQ 10KW
EnerSys c  US
PARC HORIZON 2000
F-62117 BNEBIFHE5
LISTED
Input / AC
3x480V / 15A - 50/60 HZ
Output / DC

24V	36V	
240A	240A	180A

SN: IVK23953




41.006244 -89.136246
12/10/2018 2:01:42 PM

TC3 EQ 10KW

EnerSys



LISTED

TRANSFORMER POWER
1 - 800-123-4567

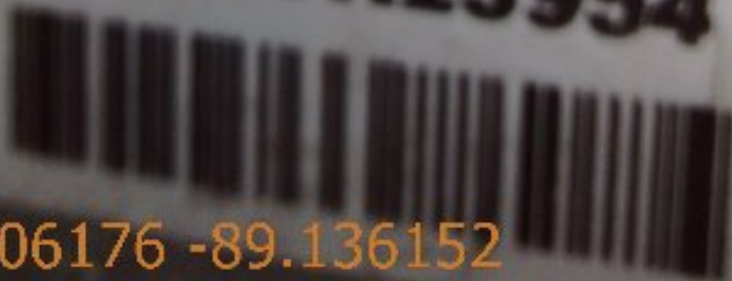
Input / AC

3x480V / 15A - 50/60 HZ

Output / DC

24V	36V	48V
240A	240A	180A

SN: IVK23954



41.006176 -89.136152
12/10/2018 2:02:18 PM

TC3 EQ 10KW
EnerSys c  US
LISTED
PARC HORIZON 2000
F - 62117 BHEBHEES
Input / AC
3x480V / 15A - 50/60 HZ
Output / DC

24V	36V	48V
240A	240A	180A

SN: IVK23957




41.006176 -89.136152
12/10/2018 2:02:37 PM

Reading, PA 19605

E140-13
840 Ah@Ca
MIN. 33.5 A MAX. 42.0 A
1.300

800-ENERSYS

106 VOLTS
cubic
Type T-563

11-5-13

SERIAL NUMBER
NUMERO DE SERIE
NUMERO DE SERIE



RLJ816053

MADE IN U.S.A. - FABRIQUE EN U.S.A. - FABRIQUE AU E.U.C.

511320

Energys
Quality
Approver
JP

113
S 316450 D GRN

SERVICE

11-5-13

41.006631 -89.136773
12/10/2018 1:56:33 PM

Energys
Quality
Approved
JT

SERIAL NUMBER
NÚMERO DE SERIE
NUMÉRO DE SÉRIE



RMK824046

811320

MADE IN U.S.A./HECHO EN E.U.A./FABRIQUÉ AUX E.U.

41.006631 -89.136773
12/10/2018 1:56:55 PM

SERIAL NUMBER
NÚMERO DE SERIE
NUMÉRO DE SÉRIE



RMK824049

MADE IN U.S.A./HECHO EN E.U.A./FABRIQUÉ AUX E.U.

41.006631 -89.136773
12/10/2018 1:57:21 PM