

CONDITION REPORT - INTERNAL COMBUSTION

Manufacturer	Model	Year	Serial Number
HYSTER COMPANY	S70FT	2013	F187V24189L

Mast		Hours	6970
Mast Height Lowered	84	Fuel	
Mast Height Raised		Attachment	
Hydraulic Control Valve		Directional Control	
Capacity		Tires	

Mast Condition		Engine	
Mast Comments		Engine Inspected Condition	
Lift Cylinder Condition		Engine Inspected Comments	
Lift Cylinder Comments		Radiator Condition	
Tilt Cylinder Condition		Radiator Comments	
Tilt Cylinder Comments		Transmission/MDU Condition	
Carriage Condition		Transmission/MDU Comments	
Carriage Comments			
Load Backrest Condition		Steering Pump Condition	
Load Backrest Comments		Steering Pump Comments	
Forks Condition		Hydraulic Pump Condition	
Forks Comments	5"x54" forks	Hydraulic Pump Comments	
		Hydraulic Motor Condition	
Overhead Guard Condition	Damaged	Hydraulic Motor Comments	
Overhead Guard Comments	Bent	Control System Condition	
		Control System Comments	
Seat Condition			
Seat Comments		Differential Condition	
		Differential Comments	
General Appearance Condition	Good	Drive Tires % Remaining	
General Appearance Comments		Drive Tires Condition	
		Steer Tires % Remaining	
General Comments		Steer Tires Condition	
Inspected by Neil Fischer 10/02/18		Steer Axle Condition	
		Steer Axle Comments	
		Brakes Condition	
		Brakes Comments	
		Electrical Condition	
		Electrical Comments	

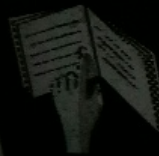
Inspector Company Name	Eastern Lift Truck	Inspection Date	10/2/2018 11:20:34 AM
Inspector Name	Wendy Davis		

(* Legend: =Checked OK)



WARNING

Trained Operators and Mechanics Only



Read Operating Manual located on seat or in operators compartment

Failure to follow operating, inspection, and maintenance instructions can cause serious injury or death!

CAPACITY WITH MAST VERTICAL AND EQUIPPED AS SHOWN

Check Operating Instructions



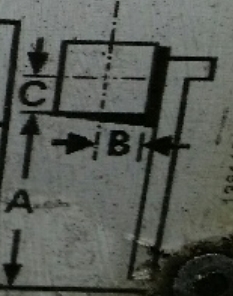
Lift Truck Model **S70FT**
Serial No. **F187V24189L**

Attachment: **977 mm (38 in) Carriage + 1372 mm (54 in) Forks**

Truck Weight **4920 kg (10840 lb)**
Tread Width **927 mm (36.5 in)**
Back Tilt **5.0 Degrees**

<u>Tire</u>	<u>Front</u>	<u>Rear</u>
Size	21X9X15 Cushion	16X7X10.5 Cushion
Pressure	---	---

MAXIMUM CAPACITY	Load Height	Load Center	
	Dim. A	Dim. B	Dim. C
3070 kg (6750 lb)	4620mm (181.9 in)	610 mm (24 in)	610 mm (24 in)
3160 kg (6950 lb)	4170 mm (164.2 in)	610 mm (24 in)	610 mm (24 in)



1381125.5



05:05
206970







