

CONDITION REPORT - INTERNAL COMBUSTION

Manufacturer	Model	Year	Serial Number
HYSTER COMPANY	H35FT	2013	F001V04647L

Mast	2 Stage FFL (Duplex)	Hours	7977
Mast Height Lowered	76.5	Fuel	LP Gas
Mast Height Raised	117	Attachment	Side Shifter
Hydraulic Control Valve	3-Function	Directional Control	Lever
Capacity	3500	Tires	Solid Pneumatic

Mast Condition		Engine	Mazda
Mast Comments		Engine Inspected Condition	
Lift Cylinder Condition		Engine Inspected Comments	
Lift Cylinder Comments		Radiator Condition	
Tilt Cylinder Condition		Radiator Comments	
Tilt Cylinder Comments		Transmission/MDU Condition	
Carriage Condition		Transmission/MDU Comments	
Carriage Comments			
Load Backrest Condition	Cut down	Steering Pump Condition	
Load Backrest Comments		Steering Pump Comments	
Forks Condition		Hydraulic Pump Condition	
Forks Comments		Hydraulic Pump Comments	
		Hydraulic Motor Condition	
Overhead Guard Condition		Hydraulic Motor Comments	
Overhead Guard Comments		Control System Condition	
		Control System Comments	
Seat Condition	Damaged		
Seat Comments	Bottom cushion ripped	Differential Condition	
		Differential Comments	
General Appearance Condition		Drive Tires % Remaining	90
General Appearance Comments		Drive Tires Condition	
		Steer Tires % Remaining	90
General Comments		Steer Tires Condition	
		Steer Axle Condition	
		Steer Axle Comments	
		Brakes Condition	
		Brakes Comments	
		Electrical Condition	
		Electrical Comments	

Rear left light/reflector missing Delete the first 8 pictures. Wrong pictures uploaded

Inspector Company Name	Eastern Lift Truck	Inspection Date	9/18/2018 9:16:26 AM
Inspector Name	DKreitz		

(* Legend: =Checked OK)







WARNING

Operators and
Mechanics Only

Read Operating
Manual located

near seat or in
operator's

compartment

Follow operating,
and maintenance
instructions can cause
injury or death!

OPERATING CAPACITY WITH MAST
RETRACTED AND
LOADS CLIPPED AS SHOWN



Lift Truck Model H35FT

Serial No. F001V04542L

Attachment: 980 mm (39 in) SS Crg + 1219 mm (48 in) Forks

Truck Weight 3030 kg (6660 lb)

Tread Width 886 mm (34.9 in)

Back Tilt 6.0 Degrees

Tire

Front

Rear

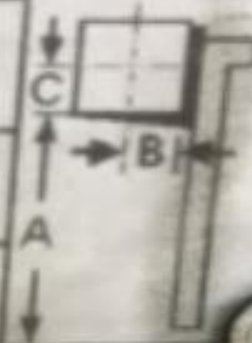
Size

6.50X10/5.0 Solid

5.00X8/3.0 Solid

Pressure

MAXIMUM CAPACITY	Load Height Dim. A	Load Center	
		Dim. B	Dim. C
1520 kg (3350 lb)	2920mm (115 in)	610 mm (24 in)	610 mm (24 in)
0 kg (0 lb)	0 mm (0 in)	0 mm (0 in)	0 mm (0 in)



operating
actions

Powershift 1 Speed Transmission



WARNING

Operators and
Drivers Only

Operating
Manual located
seat or in
operator's
compartment

Follow operating
instructions, and maintenance
instructions can cause
injury or death!
**CAPACITY WITH MAST
VERTICAL AND
EQUIPPED AS SHOWN**



Lift Truck Model **H35FT**

Serial No. **F001V04647L**

Attachment: 980 mm (39 in) SS Crg + 1219 mm (48 in) Forks

Truck Weight **3030 kg (6660 lb)**

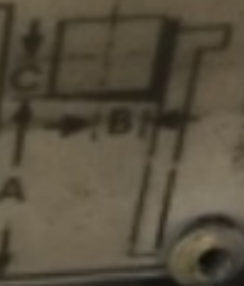
Tread Width **886 mm (34.9 in)**

Back Tilt **6.0 Degrees**

Tire Front
Size **6.50X10/5.0 Solid**
Pressure

Rear
5.00X8/3.0 Solid

MAXIMUM CAPACITY	Load Height Dim. A	Load Center	
		Dim. B	Dim. C
1520 kg (3350 lb)	2920mm (115 in)	610 mm (24 in)	610 mm (24 in)
0 kg (0 lb)	0 mm (0 in)	0 mm (0 in)	0 mm (0 in)



Check Operating Instructions

Powershift 1 Speed Transmission













205750



