

# CONDITION REPORT - ELECTRIC

Manufacturer	Model	Year	Serial Number	Corrected
YALE MANUFACTURER	ESC030AC	2012	B883N02392K	B883n02392k

Mast	2 Stage FFL (Duplex)	Hours	1216
Mast Height Lowered	84	Voltage	36 Volt
Mast Height Raised	131	Attachment	Side Shifter
Hydraulic Control Valve	3-Function	Directional Control	Monotrol
Capacity	3000	Tires	Cushion

Mast Condition		Steering Pump Condition	
Mast Comments		Steering Pump Comments	
Lift Cylinder Condition		Hydraulic Pump Condition	
Lift Cylinder Comments		Hydraulic Pump Comments	
Tilt Cylinder Condition		Hydraulic Motor Condition	
Tilt Cylinder Comments		Hydraulic Motor Comments	
Carriage Condition		Control System Condition	
Carriage Comments		Control System Comments	
Load Backrest Condition		Drive Motor Condition	
Load Backrest Comments		Drive Motor Comments	
Forks Condition	Heels worn	Differential Condition	
Forks Comments		Differential Comments	
Overhead Guard Condition		Drive Tires % Remaining	50
Overhead Guard Comments		Drive Tires Condition	
Seat Condition	Not applicable	Steer Tires % Remaining	50
Seat Comments	na	Steer Tires Condition	
General Appearance Condition	Fair	Steer Axle Condition	
General Appearance Comments		Steer Axle Comments	
General Comments		Brakes Condition	
		Brakes Comments	
		Battery Present	Yes
		Charger Present	Yes
		Electrical Condition	
		Electrical Comments	

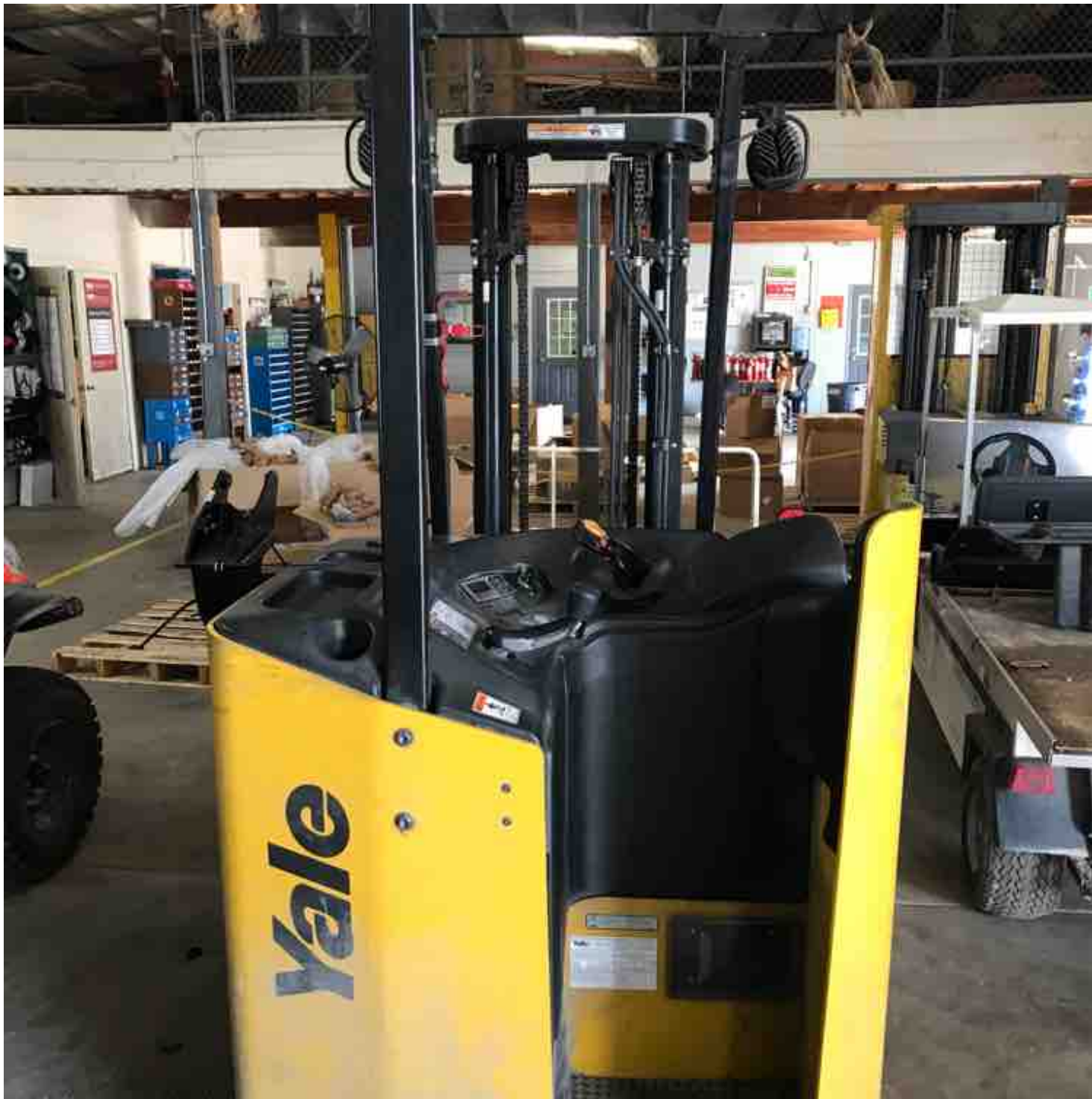
Inspector Company Name	Briggs Equipment	Inspection Date	10/10/2018 9:46:54 AM
Inspector Name	Greg Owens		

(\* Legend: =Checked OK)



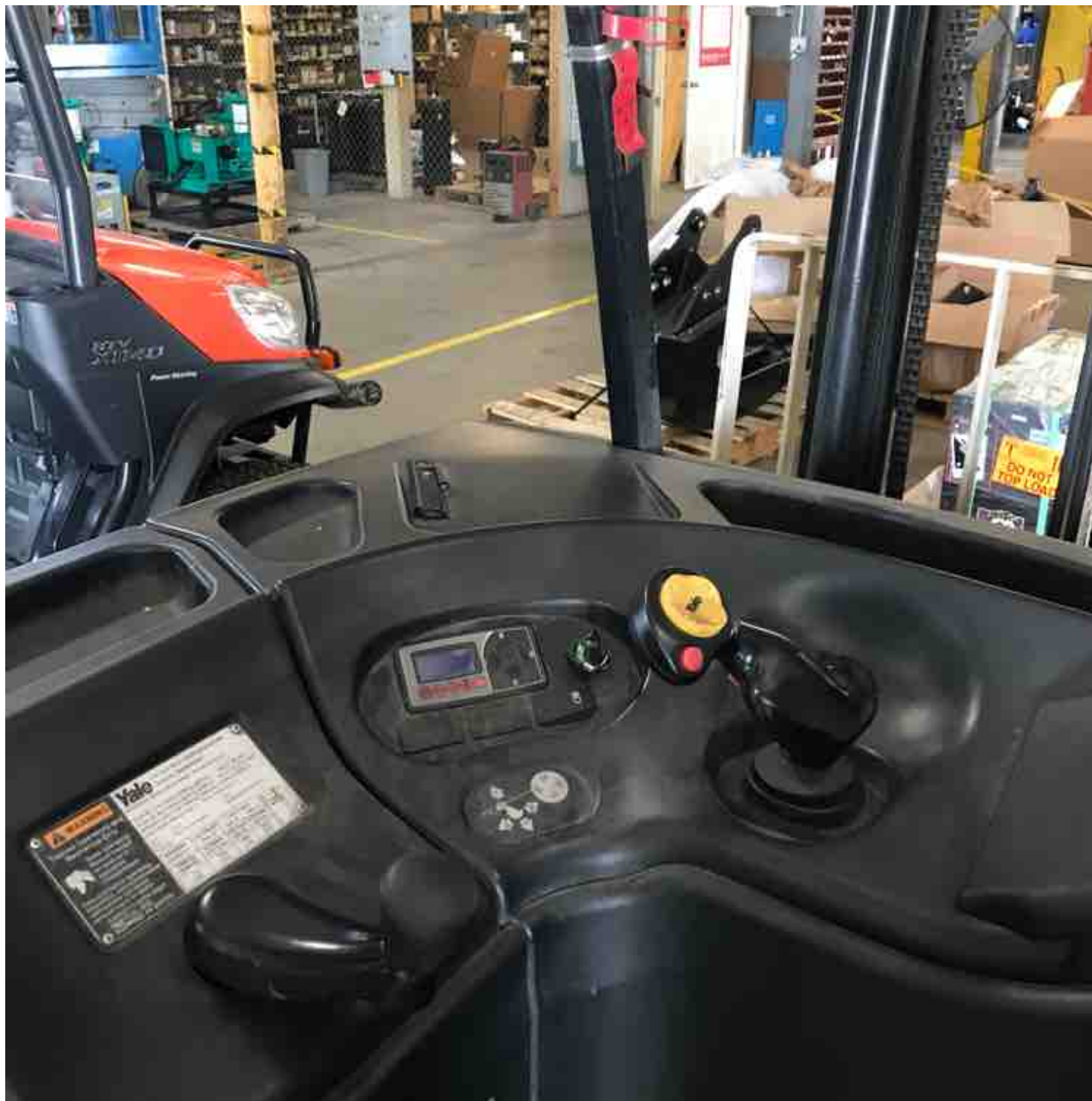




















302K

MAX CAP 3000

Yale

BRUGGS  
WALK  
PROVIDE  
PROPER  
MOUNTING

POWER