

# CONDITION REPORT - ELECTRIC

Manufacturer	Model	Year	Serial Number	Corrected
YALE MANUFACTURER	ERC030VA	2013	A969N02508L	A969N02508L

Mast	3 Stage FFL (Triplex)	Hours	8964
Mast Height Lowered	94	Voltage	36 Volt
Mast Height Raised	216.6	Attachment	S/S Fork Positioner
Hydraulic Control Valve	4-Function	Directional Control	Lever
Capacity	3000	Tires	Cushion

Mast Condition	Steering Pump Condition	
Mast Comments	Steering Pump Comments	
Lift Cylinder Condition	Hydraulic Pump Condition	
Lift Cylinder Comments	Hydraulic Pump Comments	
Tilt Cylinder Condition	Hydraulic Motor Condition	
Tilt Cylinder Comments	Hydraulic Motor Comments	
Carriage Condition	Control System Condition	
Carriage Comments	Control System Comments	
Load Backrest Condition		
Load Backrest Comments	Drive Motor Condition	
Forks Condition	Drive Motor Comments	
Forks Comments	Differential Condition	
	Differential Comments	
Overhead Guard Condition	Drive Tires % Remaining	70
Overhead Guard Comments	Drive Tires Condition	
	Steer Tires % Remaining	70
Seat Condition	Steer Tires Condition	
Seat Comments	Steer Axle Condition	
	Steer Axle Comments	
General Appearance Condition	Brakes Condition	
General Appearance Comments	Brakes Comments	

## General Comments

Inspected by Adrienne Kopko

Battery Present	Yes
Charger Present	
Electrical Condition	
Electrical Comments	

Inspector Company Name	Eastern Lift Truck	Inspection Date	12/4/2018 12:45:51 PM
Inspector Name	AKopko		

(\* Legend: =Checked OK)



# WARNING

## Trained Operators and Mechanics Only

Read Operating Manual located on seat or in operators compartment



Failure to follow operating, inspection, and maintenance instructions can cause serious injury or death!

**CAPACITY WITH MAST VERTICAL AND EQUIPPED AS SHOWN**

# Yale

Lift Truck Model **ERC030VAN36TE094**

Serial No. **A969N02508L**

Attachment: 907 mm (36 in) SS Crg + 1067 mm (42 in) Forks

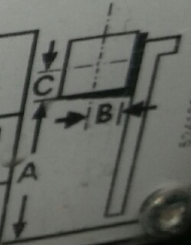
Truck Wt. Less Battery **2610 kg (5760 lb)** Type E 36 Volts  
Truck Wt. Max Battery **3750 kg (8260 lb)** Max A.H. (6 Hr Rt) **1200**

Allowable Battery Wt. **840 kg (1850 lb)** to **1130 kg (2500 lb)**  
Tread Width **780 mm (31 in)** Back Tilt **5 Degrees**

Tire Size **18X6X12-1/8 Cushion**  
Pressure ---

Rear **15X5X11-1/4 Cushion**

MAXIMUM CAPACITY	Load Height Dim. A	Load Center	
		Dim. B	Dim. C
<b>840 kg (1850 lb)</b>	<b>5500mm (216.5 in)</b>	<b>610 mm (24 in)</b>	<b>610 mm (24 in)</b>
<b>1310 kg (2900 lb)</b>	<b>4300 mm (169.3 in)</b>	<b>610 mm (24 in)</b>	<b>610 mm (24 in)</b>



504158228 A







B555U13231  
5460  
0803973  
524340163A



**WARNING**

**Trained Operators and Mechanics Only**



Read Operating Manual located on seat or in operators compartment

Failure to follow operating, inspection, and maintenance instructions can cause serious injury or death!

**CAPACITY WITH MAST VERTICAL AND EQUIPPED AS SHOWN**

**Yale**

Lift Truck Model **ERC030VAN36TE094**

Serial No. **A969N02508L**

Attachment: 907 mm (36 in) SS Crg + 1067 mm (42 in) Forks

Truck Wt. Less Battery **2610 kg (5760 lb)** Type E **36 Volts**  
 Truck Wt. Max Battery **3750 kg (8260 lb)** Max A.H. (6 Hr Rt) **1200**

Allowable Battery Wt. **840 kg (1850 lb) to 1130 kg (2500 lb)**

Tread Width **780 mm (31 in)** Back Tilt **5 Degrees**

Tire Front **18X6X12-1/8 Cushion** Rear **15X5X11-1/4 Cushion**  
 Size **---** Pressure **---**

MAXIMUM CAPACITY	Load Height Dim. A	Load Center	
		Dim. B	Dim. C
<b>840 kg (1850 lb)</b>	<b>5500mm (216.5 in)</b>	<b>610 mm (24 in)</b>	<b>610 mm (24 in)</b>
<b>1310 kg (2900 lb)</b>	<b>4300 mm (169.3 in)</b>	<b>610 mm (24 in)</b>	<b>610 mm (24 in)</b>



5047-3228-4











