

# CONDITION REPORT - ELECTRIC

Manufacturer	Model	Year	Serial Number
YALE MANUFACTURER	ERC100HH	2013	A938N01692L

Mast	2 Stage FFL (Duplex)	Hours	1276
Mast Height Lowered	85	Voltage	48 Volt
Mast Height Raised	110.2	Attachment	None
Hydraulic Control Valve	3-Function	Directional Control	Monotrol
Capacity	10000	Tires	Cushion

Mast Condition		Steering Pump Condition	
Mast Comments		Steering Pump Comments	
Lift Cylinder Condition		Hydraulic Pump Condition	
Lift Cylinder Comments		Hydraulic Pump Comments	
Tilt Cylinder Condition		Hydraulic Motor Condition	
Tilt Cylinder Comments		Hydraulic Motor Comments	
Carriage Condition		Control System Condition	
Carriage Comments		Control System Comments	
Load Backrest Condition	Bars Missing	Drive Motor Condition	
Load Backrest Comments		Drive Motor Comments	
Forks Condition	Missing	Differential Condition	
Forks Comments		Differential Comments	
Overhead Guard Condition		Drive Tires % Remaining	60
Overhead Guard Comments		Drive Tires Condition	
Seat Condition		Steer Tires % Remaining	50
Seat Comments		Steer Tires Condition	Chunked
General Appearance Condition		Steer Axle Condition	
General Appearance Comments		Steer Axle Comments	
General Comments		Brakes Condition	Soft
		Brakes Comments	Worn Out
		Battery Present	Yes
		Charger Present	Yes
		Electrical Condition	
		Electrical Comments	

Missing 1/2 floor boards and mats

Inspector Company Name	Bill Valaitis	Inspection Date	12/14/2018 10:23:12 AM
Inspector Name	bvalaitis		

(\* Legend: =Checked OK)

**WARNING**

**Trained Operators and Mechanics Only**



Read Operating Manual located on seat or in operators compartment

Failure to follow operating, inspection, and maintenance instructions can cause serious injury or death.

**CAPACITY WITH MAST VERTICAL AND EQUIPPED AS SHOWN**

**Yale**

Lift Truck Model ERC100VHM48TV085

Serial No. A938N01692L

Attachment: 1215 mm (48 in) Carriage + Bruce Industrial Co. False carriage w/ Forks. 1980 FRK-6

Truck Wt. Less Battery 6260 kg (13800 lb) Type EO 48 Volt

Truck Wt. Max Battery 8780 kg (19350 lb) Max. A/B (G H R) 1000

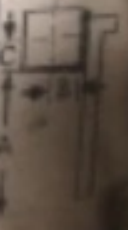
Allowable Battery Wt. 1310 kg (4000 lb) to 2520 kg (5550 lb)

Tread Width 1020 mm (40.0 in) Back Tilt 5.0 Degrees

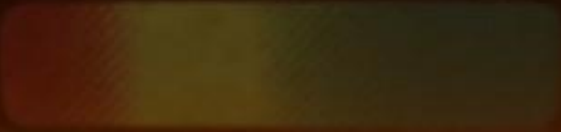
Tire Front 18X7X12-5B Cushion




Size 22X12X16 Cushion

MAXIMUM CAPACITY	Load Height Dim. A	Load Center	
		Dim. B	Dim. C
4240 kg (9350 lb)	2800mm (110.2 in)	610 mm (24 in)	610 mm (24 in)
0 kg (0 lb)	0 mm (0 in)	0 mm (0 in)	0 mm (0 in)

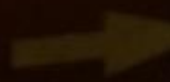


Yale



		1276
		1257

#





Yale

Yale

394

13

NORTHEAST

EE

↓







**WARNING**

**Trained Operators and Mechanics Only**



Read Operating Manual located on seat or in operators compartment

Failure to follow operating, inspection, and maintenance instructions can cause serious injury or death.

**CAPACITY WITH MAST VERTICAL AND EQUIPPED AS SHOWN**

**Yale**

Lift Truck Model **ERC100VHM48TV085**

Serial No. **A938N01692L**

Attachment: 1215 mm (48 in) Carriage + Bruce Industrial Co. False carriage w/ Forks. 1980 FRK-6

Truck Wt. Less Battery **6260 kg (13800 lb)** Type **EO 48 Volt**

Truck Wt. Max Battery **8780 kg (19350 lb)** Max. A/B (G 16 RT) **1000**

Allowable Battery Wt. **1310 kg (4000 lb)** to **2520 kg (5550 lb)**

Tread Width **1020 mm (40.0 in)** Back Tilt **5.0 Degrees**

Tire **Front**  
Size **22X12X16 Cushion**

Rear **18X7X12-5B Cushion**

MAXIMUM CAPACITY	Load Height Dim. A	Load Center	
		Dim. B	Dim. C
<b>4240 kg (9350 lb)</b>	<b>2800mm (110.2 in)</b>	<b>610 mm (24 in)</b>	<b>610 mm (24 in)</b>
<b>0 kg (0 lb)</b>	<b>0 mm (0 in)</b>	<b>0 mm (0 in)</b>	<b>0 mm (0 in)</b>

