

CONDITION REPORT - ELECTRIC

Manufacturer	Model	Year	Serial Number
HYSTER COMPANY	E50XN	2013	A268N10270L

Mast	3 Stage FFL (Triplex)	Hours	6471
Mast Height Lowered		Voltage	36 Volt
Mast Height Raised	189	Attachment	Side Shifter
Hydraulic Control Valve	3-Function	Directional Control	Lever
Capacity		Tires	Cushion

Mast Condition	Steering Pump Condition	
Mast Comments	Steering Pump Comments	
Lift Cylinder Condition	Hydraulic Pump Condition	
Lift Cylinder Comments	Hydraulic Pump Comments	
Tilt Cylinder Condition	Hydraulic Motor Condition	
Tilt Cylinder Comments	Hydraulic Motor Comments	
Carriage Condition	Control System Condition	
Carriage Comments	Control System Comments	
Load Backrest Condition		
Load Backrest Comments	Drive Motor Condition	
Forks Condition	Drive Motor Comments	
Forks Comments	Differential Condition	
	Differential Comments	
Overhead Guard Condition	Drive Tires % Remaining	70
Overhead Guard Comments	Drive Tires Condition	
	Steer Tires % Remaining	70
Seat Condition	Steer Tires Condition	
Seat Comments	Steer Axle Condition	
	Steer Axle Comments	
General Appearance Condition	Brakes Condition	
General Appearance Comments	Brakes Comments	

General Comments

Battery Present	Yes
Charger Present	Yes
Electrical Condition	
Electrical Comments	

Inspector Company Name	Pape	Inspection Date	12/17/2018 3:02:59 PM
Inspector Name	bemerson		

(* Legend: =Checked OK)



Lift Truck Model E50XN-27

Serial No. A268N10270L

Attachment: 978 mm (39 in) SS Crg + 1220 mm (48 in) Forks

Truck Wt. Less Battery 3370 kg (7430 lb) Type E 36 Volts

Truck Wt. Max Battery 4870 kg (10720 lb) Max A.H.(6 Hr Rt) 1400

Allowable Battery Wt. 1040 kg (2300 lb) to 1500 kg (3300 lb)

Tread Width 890 mm (35.2 in) Back Tilt 5 Degrees

Tire

Front

Rear

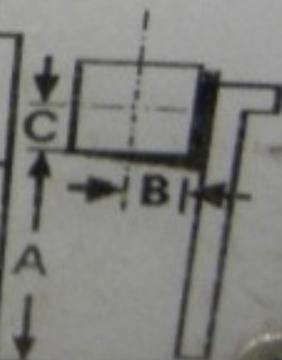
Size

21X7X15 Cushion

16X5X10.5 Cushion

Pressure ---

MAXIMUM CAPACITY	Load Height Dim. A	Load Center	
		Dim. B	Dim. C
2110 kg (4650 lb)	4800mm (189 in)	610 mm (24 in)	610 mm (24 in)
2180 kg (4800 lb)	4350 mm (171.3 in)	610 mm (24 in)	610 mm (24 in)



G

and

ly

ating

ated on

ment

operating,

maintenance

cause

r death!

(WITH MAST

L AND

ED S SHOWN



CAUTION
LOW VOLT
CONTACT

HYSTER

HYSTER

HYSTER

HYSTER

POWERLINE
PROTECTED POWER

TEMPERATURE GAUGE

50






THE UNIVERSITY OF CHICAGO
LIBRARY
1207 EAST 58TH STREET
CHICAGO, ILL. 60637
TEL: 773-936-3000
WWW.CHICAGO.LIBRARY.EDU

CHAVNER

PL 425-842-40



UNIVERSITY OF CHICAGO
LIBRARY

