

# CONDITION REPORT - ELECTRIC

<b>Manufacturer</b>	<b>Model</b>	<b>Year</b>	<b>Serial Number</b>
<b>HYSTER COMPANY</b>	<b>E55XN</b>	<b>2012</b>	<b>A268N09001K</b>

Mast		Hours	10300
Mast Height Lowered	83	Voltage	24 Volt
Mast Height Raised	189	Attachment	
Hydraulic Control Valve Capacity	4-Function	Directional Control	Lever
		Tires	

Mast Condition		Steering Pump Condition	
Mast Comments		Steering Pump Comments	
Lift Cylinder Condition		Hydraulic Pump Condition	
Lift Cylinder Comments		Hydraulic Pump Comments	
Tilt Cylinder Condition		Hydraulic Motor Condition	
Tilt Cylinder Comments		Hydraulic Motor Comments	
Carriage Condition		Control System Condition	
Carriage Comments		Control System Comments	
Load Backrest Condition		Drive Motor Condition	
Load Backrest Comments		Drive Motor Comments	
Forks Condition		Differential Condition	
Forks Comments		Differential Comments	
Overhead Guard Condition		Drive Tires % Remaining	60
Overhead Guard Comments		Drive Tires Condition	
Seat Condition	Damaged	Steer Tires % Remaining	60
Seat Comments	Needs both Cushions	Steer Tires Condition	
General Appearance Condition		Steer Axle Condition	
General Appearance Comments		Steer Axle Comments	
General Comments		Brakes Condition	
		Brakes Comments	
		Battery Present	Yes
		Charger Present	Yes
		Electrical Condition	
		Electrical Comments	

Inspector Company Name	PAPE MATERIAL HANDLING	Inspection Date	12/11/2018 2:07:15 PM
Inspector Name	Derrick Guzman		

(\* Legend: =Checked OK)



# WARNING

## Trained Operators and Mechanics Only



Read Operating Manual located on seat or in operators compartment

Failure to follow operating, inspection, and maintenance instructions can cause serious injury or death!

**CAPACITY WITH MAST VERTICAL AND EQUIPPED AS SHOWN**



Lift Truck Model **E55XN-33**

Serial No. **A268N09001K**

Attachment: **978 mm (39 in) Carriage + Fork positioner-SS Cascade 55F-FPS-Q221434R1**

Truck Wt. Less Battery **3320 kg (7310 lb)** Type E 48 Volts

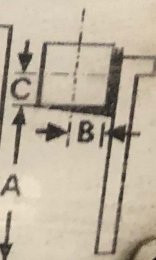
Truck Wt. Max Battery **5100 kg (11220 lb)** Max A.H. (6 Hr Rt) **1300**

Allowable Battery Wt. **1310 kg (2900 lb)** to **1770 kg (3900 lb)**

Tread Width **890 mm (35.2 in)** Back Tilt **5 Degrees**

Tire	<u>Front</u>	<u>Rear</u>
Size	<b>21X7X15 Cushion</b>	<b>16X5X10.5 Cushion</b>
Pressure	---	---

MAXIMUM CAPACITY	Load Height Dim. A	Load Center	
		Dim. B	Dim. C
2200 kg (4850 lb)	4800mm (189 in)	610 mm (24 in)	610 mm (24 in)
2270 kg (5000 lb)	4350 mm (171.3 in)	610 mm (24 in)	610 mm (24 in)



14738-433

OPERATING INSTRUCTIONS

OPERATING INSTRUCTIONS

