

CONDITION REPORT - ELECTRIC

Manufacturer	Model	Year	Serial Number
HYSTER COMPANY	E45XN	2013	A368N10067L

Mast	3 Stage FFL (Triplex)	Hours	4703
Mast Height Lowered		Voltage	48 Volt
Mast Height Raised	189	Attachment	Side Shifter
Hydraulic Control Valve	3-Function	Directional Control	Lever
Capacity	4500	Tires	Cushion

Mast Condition		Steering Pump Condition	
Mast Comments		Steering Pump Comments	
Lift Cylinder Condition		Hydraulic Pump Condition	
Lift Cylinder Comments		Hydraulic Pump Comments	
Tilt Cylinder Condition		Hydraulic Motor Condition	
Tilt Cylinder Comments		Hydraulic Motor Comments	
Carriage Condition		Control System Condition	
Carriage Comments		Control System Comments	
Load Backrest Condition		Drive Motor Condition	
Load Backrest Comments		Drive Motor Comments	
Forks Condition		Differential Condition	
Forks Comments		Differential Comments	
Overhead Guard Condition		Drive Tires % Remaining	70
Overhead Guard Comments		Drive Tires Condition	
Seat Condition		Steer Tires % Remaining	70
Seat Comments		Steer Tires Condition	
General Appearance Condition	Good	Steer Axle Condition	
General Appearance Comments		Steer Axle Comments	
		Brakes Condition	
		Brakes Comments	

General Comments

Battery Present	Yes
Charger Present	Yes
Electrical Condition	
Electrical Comments	

Inspector Company Name	Briggs Equipment	Inspection Date	12/5/2018 4:22:32 PM
Inspector Name	jdelagarza		

(* Legend: =Checked OK)





Lift Truck Model E45XN-30

Serial No. A268N10067L

Attachment: 978 mm (39 in) SS Crg + 1220 mm (48 in) Forks

Truck Wt. Less Battery 3020 kg (6650 lb) Type E 48 Volts

Truck Wt. Max Battery 4610 kg (10150 lb) Max A.H.(6 Hr Rt)

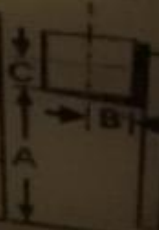
Allowable Battery Wt. 1130 kg (2500 lb) to 1590 kg (3510 lb)

Tread Width 890 mm (35.2 in) Back Tilt 5 Degrees

Tire Front
Size 21X7X15 Cushion
Pressure

Rear
16X5X10.5 Cushion

MAXIMUM CAPACITY	Load Height Dim. A	Load Center	
		Dim. B	Dim. C
1880 kg (4150 lb)	480mm (189 in)	610 mm (24 in)	610 mm (24 in)
1950 kg (4300 lb)	4350 mm (171.3 in)	610 mm (24 in)	610 mm (24 in)



ors and Only
operating
located on
or in
ators
partment
ollow operating.
and maintenance
one can cause
injury or death!
CAPACITY WITH MAST
VERTICAL AND
EQUIPPED AS SHOWN





