

CONDITION REPORT - ELECTRIC

Manufacturer	Model	Year	Serial Number
HYSTER COMPANY	R30XM3	2012	E174N01638K

Mast	Hours	3701
Mast Height Lowered	Voltage	24 Volt
Mast Height Raised	Attachment	None
Hydraulic Control Valve	Directional Control	
Capacity	Tires	Cushion

Mast Condition	Steering Pump Condition	
Mast Comments	Steering Pump Comments	
Lift Cylinder Condition	Hydraulic Pump Condition	
Lift Cylinder Comments	Hydraulic Pump Comments	
Tilt Cylinder Condition	Hydraulic Motor Condition	
Tilt Cylinder Comments	Hydraulic Motor Comments	
Carriage Condition	Control System Condition	
Carriage Comments	Control System Comments	
Load Backrest Condition	Drive Motor Condition	
Load Backrest Comments	Drive Motor Comments	
Forks Condition	Differential Condition	
Forks Comments	Differential Comments	
Overhead Guard Condition	Drive Tires % Remaining	85
Overhead Guard Comments	Drive Tires Condition	
Seat Condition	Steer Tires % Remaining	85
Seat Comments	Steer Tires Condition	
General Appearance Condition	Steer Axle Condition	
General Appearance Comments	Steer Axle Comments	
General Comments	Brakes Condition	
	Brakes Comments	
	Battery Present	Yes
	Charger Present	Yes
	Electrical Condition	
	Electrical Comments	

Unit is in Great Shape - No Issues - Re-inspected on 06/28/18 by Neil Fischer

Inspector Company Name	Eastern Lift Truck Co	Inspection Date	10/2/2018 10:55:31 AM
Inspector Name	Wendy Davis		

(* Legend: =Checked OK)



Lift Truck Model
R30XMS3

Attachment: 1016 mm (40 in) Wide X 898 mm (27.8 in)
Deep Op Platform + 1067 mm (42 in)
Forks

Type E 24 Volts Max A.H. (6 Hr R) 770

Truck Weight
Less Battery 2186 kg (4818 lb)
Max Battery 2729 kg (6018 lb)
Min Battery Wt. 408 kg (900 lb)
Max Battery Wt. 644 kg (1200 lb)
Base Width 1041 mm (41 in)
Wheelbase 1409 mm (55.6 in)

Trained Operators and Mechanics Only



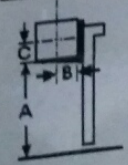
Read Operating Manual located
on Drive Unit Cover

WARNING

Failure to follow operating, inspection, and
maintenance instructions can cause serious
injury or death!

**CAPACITY WITH MAST VERTICAL
AND EQUIPPED AS SHOWN**

MAXIMUM CAPACITY	1360 kg (3000 lb)	kg (lb)
Load Height Dim. A	5410 mm (213 in)	mm (in)
Load Center Dim. B	610 mm (24 in)	mm (in)
Load Center Dim. C	610 mm (24 in)	mm (in)



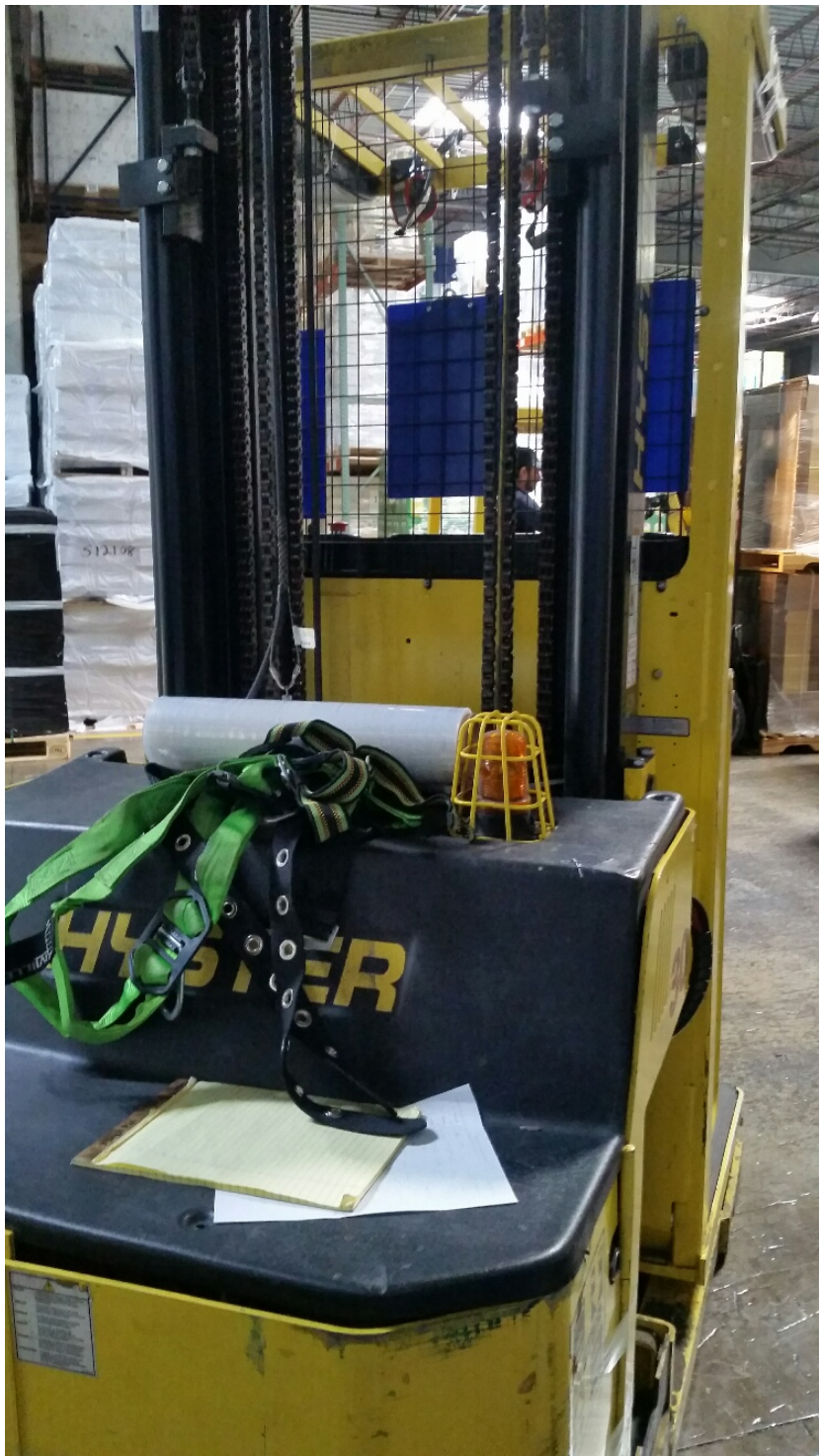
Serial Number
E174N01638K

1801351.1

























Lift Truck Model
R30XMS3

Attachment: 1016 mm (40 in) Wide X 667 mm (27.5 in)
Deep Op Platform + 1067 mm (42 in)
Forks

Type E 24 Volts Max A.H. (6 Hr R) 770

Truck Weight

Less Battery 2185 kg (4818 lb)

Max Battery 2729 kg (6018 lb)

Min Battery Wt. 408 kg (900 lb)

Max Battery Wt. 644 kg (1420 lb)

Base Width 1041 mm (41 in)

Wheelbase 1409 mm (55.5 in)

Trained Operators and Mechanics Only



Read Operating Manual located
on Drive Unit Cover

WARNING

Failure to follow operation, inspection, and
maintenance instructions can cause serious
injury or death!

**CAPACITY WITH MAST VERTICAL
AND EQUIPPED AS SHOWN**

MAXIMUM CAPACITY	1360 kg (3000 lb)	kg (lb)
Load Height Dim. A	5410 mm (213 in)	mm (in)
Load Center Dim. B	610 mm (24 in)	mm (in)
Load Center Dim. C	610 mm (24 in)	mm (in)



Serial Number
E174N01638K

